

A positive current output OTA-based universal biquad circuit configuration

Takao Tsukutani

Professor Emeritus, National Institute of Technology, Matsue College, Japan

Abstract

This paper presents a universal biquad circuit employing only positive current output operational trans-conductance amplifiers (OTAs). The circuit enables low-pass (LP), band-pass (BP), high-pass (HP), band-stop (BS) and all-pass (AP) responses by the selection and addition of the circuit currents. Moreover the circuit parameters ω_0 , Q and H can be set orthogonally by adjusting the bias currents of the OTAs. The biquad circuit enjoys very low sensitivity with respect to the circuit components.

Keywords: Analog circuits, Biquad responses, OTA, CMOS technology

Date of Submission: 09-04-2026

Date of acceptance: 22-04-2026

I. Introduction

High performance active circuits have received considerable attention. Circuit designs using active devices such as second generation current conveyor (CCII), differential voltage current conveyor (DVCC), the OTA and others have been reported in the literature [1-7]. OTA is a very useful active device, and OTA-based circuit has electronic tuning capability for circuit responses by the bias currents. The positive current output OTA is composed of a simpler circuit configuration than the negative current output one. Hence it has a wide band operation and low power performance compared with the negative current output OTA.

The biquad circuit is a very useful second-order function block for realizing the high-order circuit transfer functions. Several biquad circuits using the OTAs, DVCCs and CCIIs have been previously discussed [1-6]. However the biquad circuit based on the positive current output OTAs hasn't been studied sufficiently [7].

This paper introduces a universal biquad circuit employing only the positive current output OTAs as mentioned above. First we propose a trans-admittance-mode biquad circuit, and then we show typical current-mode and voltage-mode circuits using the trans-admittance-mode one. The circuit enables the LP, BP, HP, BS and AP responses by the selection and addition of the circuit currents. Moreover the circuit parameters ω_0 , Q and H can be set orthogonally by the bias currents of the OTAs electronically. Moreover it is made clear that the biquad circuit enjoys very low sensitivity to the circuit components.

II. OTA

The symbol of the positive current output OTA is given in Fig.1, and hereinto they show dual current output OTA.

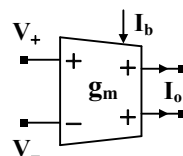


Figure 1: Symbol of OTA

The current output I_o of the OTA is given by:

$$I_o = g_m (V_+ - V_-) \quad (1)$$

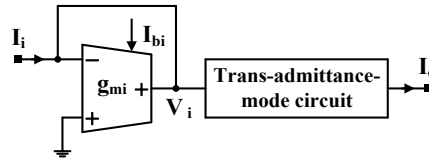


Figure 4: Typical current-mode biquad circuit

The circuits enable the BS, BP and LP responses by the selection of the output currents. The circuit transfer functions are as follows:

$$T_{BS}(s) = \frac{I_{BS}(s)}{I_i(s)} = \frac{g_{m1}}{g_{mi}} \frac{s^2 C_1 C_2 + g_{m2} g_{m3}}{s^2 C_1 C_2 + s C_2 g_{m1} + g_{m2} g_{m3}} \quad (6)$$

$$T_{BP}(s) = \frac{I_{BP}(s)}{I_i(s)} = -\frac{g_{m1}}{g_{mi}} \frac{s C_2 g_{m4}}{s^2 C_1 C_2 + s C_2 g_{m1} + g_{m2} g_{m3}} \quad (7)$$

$$T_{LP}(s) = \frac{I_{LP}(s)}{I_i(s)} = -\frac{g_{m1}}{g_{mi}} \frac{g_{m2} g_{m3}}{s^2 C_1 C_2 + s C_2 g_{m1} + g_{m2} g_{m3}} \quad (8)$$

Moreover the HP and AP responses can be achieved by the current addition of $I_{HP}(s) = I_{BS}(s) + I_{LP}(s)$ and $I_{AP}(s) = I_{BS}(s) + I_{BP}(s)$, respectively. The circuit transfer functions are given as:

$$T_{HP}(s) = \frac{I_{HP}(s)}{I_i(s)} = \frac{g_{m1}}{g_{mi}} \frac{s^2 C_1 C_2}{s^2 C_1 C_2 + s C_2 g_{m1} + g_{m2} g_{m3}} \quad (9)$$

$$T_{AP}(s) = \frac{I_{AP}(s)}{I_i(s)} = \frac{g_{m1}}{g_{mi}} \frac{s^2 C_1 C_2 - s C_2 g_{m4} + g_{m2} g_{m3}}{s^2 C_1 C_2 + s C_2 g_{m1} + g_{m2} g_{m3}} \quad (10)$$

The circuit parameters ω_0 , Q and H are represented as below:

$$\omega_0 = \sqrt{\frac{g_{m2} g_{m3}}{C_1 C_2}}, \quad Q = \frac{1}{g_{m1}} \sqrt{\frac{C_1 g_{m2} g_{m3}}{C_2}}, \quad H = \frac{g_{m1}}{g_{mi}} \quad (11)$$

The circuit parameter ω_0 , Q and H can be set orthogonally according to the bias currents.

Table 1 shows the sensitivities with respect to the circuit components. These values are rather small. We can find from them that the circuit enjoys very low sensitivity to the circuit components. It is noted that the sensitivities are not dependent on the circuit component values.

Table 1: Component sensitivity (current-mode circuit)

x	ω_0	Q	H
g_{m1}	0.0	-1.0	1.0
g_{m2}	0.5	0.5	0.0
g_{m3}	0.5	0.5	0.0
g_{m4}	0.0	0.0	0.0
g_{mi}	0.0	0.0	-1.0
C_1	-0.5	0.5	0.0
C_2	-0.5	-0.5	0.0

The voltage-mode biquad circuit is constructed with the trans-admittance-mode one as shown in Fig.5. The current output $I_o(s)$ presents any of the current outputs in the basic current-mode circuit. And the output voltage $V_o(s)$ is obtained converting the current output $I_o(s)$ to voltage. The circuit can realize five circuit responses, and the circuit parameters ω_0 and Q are same as the current-mode circuit. The gain constant H is given by $H = g_{m1}/g_{mo}$.

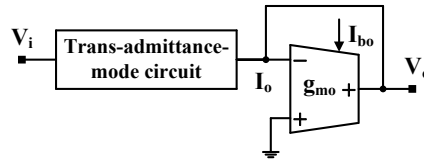


Figure 5: Voltage-mode biquad circuit

Table 2 shows the sensitivities to the circuit components. It is found that the voltage-mode biquad circuit has very low sensitivity as well as the current-mode one.

Table 2: Component sensitivity (voltage-mode circuit)

X	ω_0	Q	H
g_{m1}	0.0	-1.0	1.0
g_{m2}	0.5	0.5	0.0
g_{m3}	0.5	0.5	0.0
g_{m4}	0.0	0.0	0.0
g_{m0}	0.0	0.0	-1.0
C_1	-0.5	0.5	0.0
C_2	-0.5	-0.5	0.0

IV. Conclusion

This paper has described a universal biquad circuit employing only positive current output OTAs. The circuit can achieve five standard circuit responses (i.e. LP, BP, HP, BS and AP responses) by selecting and adding the circuit currents. The circuit parameters ω_0 , Q and H can be set orthogonally by the bias currents of the OTAs. Moreover it has been made clear that the biquadratic circuit enjoys very low sensitivity to the circuit components.

The biquad circuit has several advantages concerning the wide band operation, low power dissipation and electronic adjusting of the circuit parameters, etc. The circuit configuration is very suitable for implementation in CMOS technology.

The non-idealities of the OTA affect the circuit performances. The solution for this will be discussed in the future.

References

- [1] A. Fabre, et al., "High frequency applications based on a new current controlled conveyor," IEEE Transactions on Circuits and Systems, vol.43, no.2, pp.82-91, 1996.
- [2] S.H. Tu, et al., "Novel versatile insensitive universal current-mode biquad employing two second-generation current-conveyors," International Journal of Electronics, vol.89, no.12, pp.897-pp.903, 2002.
- [3] H.O. Elwan, A.M. Soliman, "Novel CMOS differential voltage current conveyor and its applications," IEE Proceedings on Circuit, Device, System, vol.144, no.3, pp.195-200, 1997.
- [4] Y. Tao, J.K. Fidler, "Electronically tunable dual-OTA second-order sinusoidal oscillators/filters with non-interacting controls: a systematic synthesis approach," IEEE Transactions on Circuits and Systems, vol.47, no.2, pp.117-129, 2000.
- [5] T. Tsukutani, et al., "Current-mode biquad using OTAs and CF," Electronics Letters, vol.39, no.3, pp.262-263, 2003.
- [6] D.R. Bhaskar, et al., "New OTA-C universal current-mode/trans-admittance biquads," IEICE Electronics Express, vol.2, no.1, pp.8-13, 2005.
- [7] T. Tsukutani, "Novel positive current output OTA-based biquad circuits," International Journal of Modern Engineering Research, vol.15, Issue 5, pp.12-15, Sep.-Oct. 2025.