

# Comparative Analysis Of Plant Disease Detection Using Machine Learning Algorithm

Corresponding Author: Akshata B Astikar

PG Scholar, Dept. Of Computer Science & Engineering, PDA Engineering College Kalburgi, India

**ABSTRACT:** Plant sicknesses influence the progress of the harvests, vegetables, fruits..etc, making their initial distinctive proof is extremely imperative. Several Machine Learning ( ML) replica have been utilize for the recognition as well as categorization of plant illnesses, yet this area encompass extraordinary potential as far as extended precision. All thing being equal, some exploration hole have be eminent so as to accomplish more prominent frankness in the sighting of ailment in plants even before their side effect show up obviously. Here functional SVM as well as K means algorithm pro plant illness order reason pro existing is to verify if the leaf is solid. As of this, got the outcome to SVM give 96% as well as K means give 98% accuracy.

**KEY WORDS:** Machine Learning, Plant diseases

Date of Submission: 03-10-2020

Date of acceptance: 16-10-2020

## I. INTRODUCTION

Machine learning is one of the field of man-made awareness to effort consequently or offer way to a meticulous structure pro playing out an activity. The purpose of Machine learning is to realize the information structure as well as fit to information keen on model to be esteemed plus utilize via the Individuals.

A logical investigation of calculation plus quantifiable model utilize via computer system to play out a meticulous assignment, depending rather on instance plus surmise, lacking utilize express guidelines is call Machine Learning. So as to reconcile on forecasts otherwise choice without being unequivocally modified to play out assignment, Machine learning computation construct a numerical replica dependent on test information, identified as "preparing statistics". In a extensive scope of utilizations, pro instance, email unraveling as well as computer vision, Machine learning computation be utilize where it is troublesome otherwise unfeasible to construct up a habitual computation to play out the undertaking viably.

### Machine Learning Algorithms

**1. SVM:** Support-vector equipment in Machine learning be administer learning replica through linked learning computation to investigate information utilize pro order as well as decline assessment.

**2. Kmeans:** A strategy for vector quantization, initially as of signal prepare, is k-implies alliance, which intend to detachment n perception keen on k bunch in which each discernment have a place through the bunch through the closest mean, filling in as a bunch replica.

In commonplace area, ranchers might imagine to it is hard to split among the infection that might be accessible in their harvest. Heading off to the agribusiness office as well as verdict what the sickness might be isn't modest for them. Our main ambition is to divide among the recognition of sickness in a plant via checking its morphology through portrait pleasing care of as well as Machine learning.

### 1.1 TYPES Of Disease

**Red Rot:** The malady initially show up on the mid rib of plants as red luminous injury as well as show itself as hang plus altering upper leaf tone. The shrinking of leaves proceed downwards. It classically influence the third otherwise fourth leaf as of top plus show ventilation at the tip. The essence become red as well as earthy colored later on.

**Leaf Spot:** The sickness might be describe itself on plants as little sore, which incessantly enlarge along mid rib plus guarantee dim red to brown tone. In severe sickness, the leaves become dry influence photosynthesis.

**Yellow Spot:**Two type of Yellow Spot exist. Yellow in shade is the principal sort of spot. The spot, be that as it might, seem, via all account, to be red in precise assortment of leaves through red stalk. The two kind encompass alike physical highlights, regardless of the shade. Fit as a fiddle plus dimension, they be unpredictable. They preserve enlarge as of minute dabs to spot through a dimension of 1 cm.

**Brown Spot:** Brown spot make ruddy earthy colored dim earthy colored spot on leaves. The spot be elliptical fit as a swindle, frequently encompass via a yellow radiance plus be similarly noticeable on the two side of leaf. The long hub of the spot is usually consequent to midrib. This spot frequently resolve in general be erroneous pro the Ring Spot.

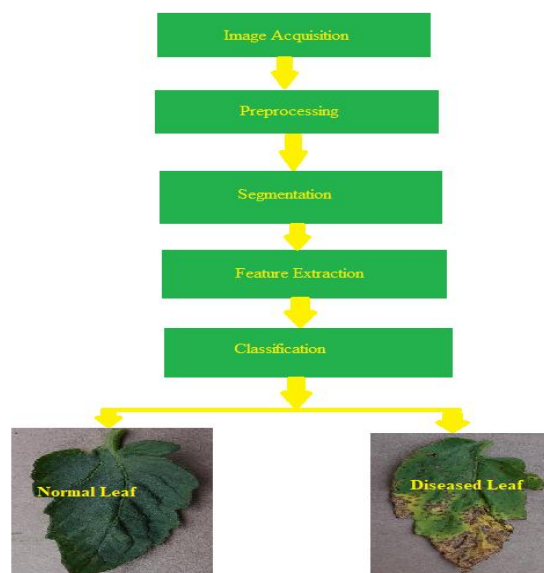


Fig. 1 Proposed System

## II. RELATED WORK

### Plant Disease Prediction using Machine Learning Algorithms

This manuscript portraystudy of dissimilarMachine learning computationapply on plant ailment forecast. A plant show some noticeable impact of infection, as a reaction to microorganism. The perceptible highlights, proinstance, form, dimension, dryness, shrivel, be useful to perceive the plant situation. These assessment credentials manage each such section plus applydissimilar AI Machine learning advancement to discover the yield. The assessmenteffortmanage choice tree, Naive Bayes hypothesis, imitation neural organization as well as k-mean allianceplus irregular woodland computation. Sickness enhancement relies upon three conditions-have plants vulnerable to illness, enormoustatmosphereplusrational microorganism. The presence of every of three circumstances is necessitypro a sickness to happen.

### Comparitive Study and Review for expansion of Disease Prediction System for Indian Crops

In this manuscript the Monitoring Solution pro Indian Agriculture plan of sickness Prediction scheme which resolveexpect sickness on Brinjal crop reliant on indication of leaf plusBrinjal in solid manner . The probabilistic replicapro DPS beshaped to decide the issue, proinstance, expectation of malady on Brinjal leaf plus on authenticBrinjalpro Indian Brinjal

Chen,Y.Hao,K.Hwang,L.Wang,andL.Wang exposed sickness forecast structurepro assortedregions. Theyperform ailment expectation on three unique ailment, proinstance, plus diabetics, cerebral inpieceas well as heart sickness. The sickness forecast is performing wear sort out statistics. Forecast of heart disease, diabetesas well as scholarly infraction is performviautilizedissimilarmachine learningcomputation like naïvebayes,Decision tree plus KNN algorithm. Theoutcome of choice tree computation performs in a way to is enhanced than KNN computationplusNaïvebayes.

Also, they anticipate to either a patient encounter as of elevated hazard of cerebral in fraction otherwise least hazard of cerebral in fraction.They utilize CNN base multi modular illness hazard probability on text statistics, pro the hazard predict of cerebral in fraction. The accuracy associations happen among CNN base unmoral malady hazard forecasts against CNN base multimodal ailment hazard probability algorithm. The

exactness of illness forecast came about up to the 94.8% through extra speedy rapidity than CNN base unimodal sickness hazard forecast algorithm. Step of relative as to of CNN-

UDRP computation the CNN base multimodal illness hazard forecast computation step just the test steps contain of two further steps. Given manuscript chip away at mutually the sort of dataset like composed plus sloppy statistics. Author takes a shot at disorderly statistics. Whilst past labor just reliant on sort out statistics, none of inventor deal through chaotic plus semi-composed statistics. But this structure planned work is relying upon poised just as chaotic statistics. B. Qian, X. Wang, N. Cao, H. Li, and Y. -

G. Jiang [2] set the Alzheimer illness hazard anticipation structure through the assist of EHR statistics of patient. Here they utilize dative learning scenery to grip a genuine concern suffer via the patient. In this the hazard replica is constructing. For to dynamic hazard forecast computation is utilize the hazard of Alzheimer sickness. M. Chen, Y. Mama, Y. Li, D. Wu, Y. Zhang, plus C. Youn [3] planned wearable 2.0 structure wherein setup sharp launder able fabric to improve the QoE plus QoS of subsequent

Age medical services scheme. Then arrangement dew IoT base information variety scheme. In to novel sensor base shrewd launder able garments shaped. Via the use of this clothing, expert got patient physiological circumstance. What's extra, through the assist of the physiological information exploration occur. In this inversion of launder intelligent luminous fabric comprise of dissimilar sensor, wires plus cathode through the assist of this part section consumer preserve equipped to gather the physiological circumstance of patient just as passionate comfort status statistics utilize of cloud base scheme. through the assist of this material, it got the physiological circumstance of the patient. Also, pro the assessment motive, this essentials is utilize. Examine the issue which be opposite whilst at same instance planning wearable 2.0 architecture

The issue in existing structure encompass of physiological information assembly, negative cerebral impact, ant wireless pro body zone organize plus Sustainable enormous physiological information accretion as well as soon. The assorted exercises perform on records like assessment on statistics, monitoring plus prediction. Again inventor cluster the useful segment of the shrewd dress speaking to Wearable 2.0 keen on sensors Integration, electrical-link base network, digital modules. In this, there be assorted application discuss like continuing malady monitoring, elderly individuals care, emotion care plus so forth.

### **III. PROPOSED SYSTEM**

The proposed framework manage set of prepare information. This incorporate prepare mutually sound as well as unhealthy provision of information. At to tip it manage crop inspection plus the recognizable proof of harvest utilize Canny's edge recognition computation.

- The planned replica is acquainted through defeat every the inconvenience to emerge in current structure.
- This framework resolve enlarge the precision of the malady recognition plus it resolve show the solution pro defeat the illness.
- It improve the profound convolution neural organization resolve enlarge the exhibition.

#### **Advantages**

elevated performance.

Give precise expectation outcome.

Lessens the statistics Loss

It can ensure the depiction in dataset

#### **Algorithms**

**SVM algorithm** The order structure is utilize pro mutually the period of prepare plus assessment. Contrast through attribute detached as of test foliage, the highlights alienated as of prepare leaves be thought about. At to tip, in sight of harmonized attribute, the photograph be categorised. So, pro the arrangement of leaf disease, the Support Vector Machine process is utilize. SVM is a paired classifier so as to utilize a hyper plane. This hyper plane is a line to isolate a plane keen on two segments on either side of every class. One class through the point prepare vector name as +1 as well as another class through the preparation vector marked as - 1. Utilize this name prepare vector, SVM find a hyper plane that at to tip expand the edge of detachment among two program. They eliminate surface plus shade qualities of each solitary section portrait. The SVM classifier is then furnishing through these extricate attribute. Highlights be predictable in this planned work. The all out numeral of highlight esteem pro a solitary leaf depiction is likewise probable. These trademark esteem be specified to a prepared SVM classifier to isolate the info leaf depiction keen on two solid plus influenced (infected) classes.

#### **Modules**

##### ***Image augmentation***

In spite of the fact to on account of a predetermined numeral of prepare information testsetthrough a superiornumeral of approach, the neural organization tend to over-fit, we utilize the portraitimprovementprocesspro misleadingly mounting datasets. The portrait increase limitsutilizebe zoom, shear, revolution, pluspreprocessing function. Inextension to this, so as to produce enlarged pictures, disparityextend, histogram equilibriumas well as versatile histogram twilight out beutilize as custom capacity. through counterfeit neural organization replicaprepate, the utilization of these limitsbring about the age of portraitthrough these property.

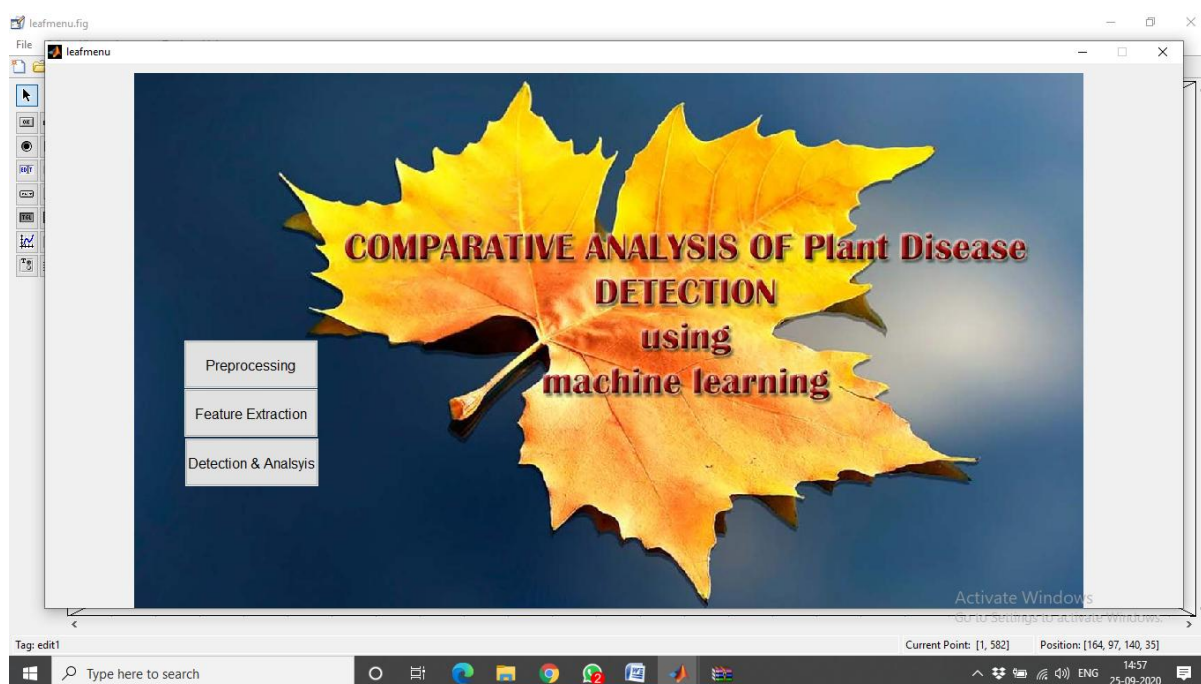
### **Augmented Images**

Versatile histogram level is appear to progress the nearby portrait contrast viaregister a little histograms tottransmit to assortedportraitsegmentplusutilize them pro neighborhood contrast alteration. similar is the outcome pro yellow leaf twist diseaseplus solid leaf test.

### **Training Neural Network**

AI replicacannotuncomplicatedly work through portrait. The portraitplusscriptto we go through our organization bedistorted over to cluster information. To entirely handle the preparation just as test portrait informational collection, we create another capabilityas well asalter it keen on a numpy record exhibit.

## **Experimental Results**



**Fig 2: Menu Screen**

It start the program. It is a menu screen of the project

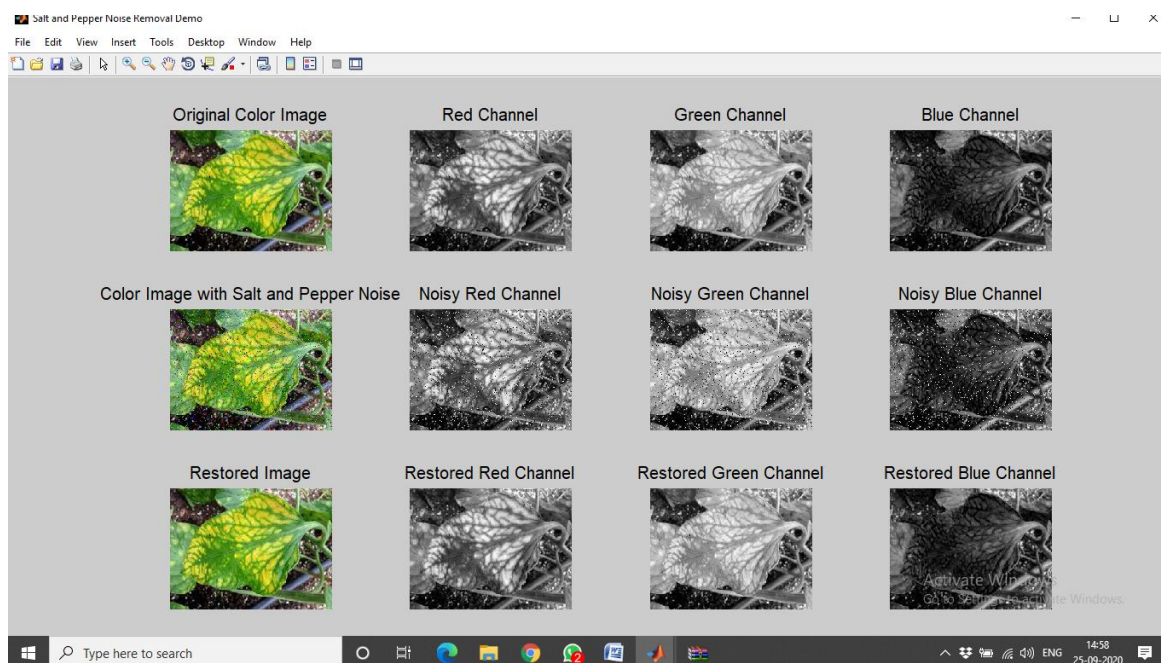


Fig 3:Preprocessing

The utilization of computer computation to make, calculate, convey, as well as show higher portrait is mechanized portrait preparing. To alter over cipher as of a portrait sensor keen on superior pictures, computerized portrait handling calculation preserve be utilize: civilizing lucidity plus wiping out tumult as well as dissimilar article Preprocessing of a portrait is noteworthy in portrait prepare so to there be no pollutions in the alienated portrait as well as it is talented to be enhanced pro the coming cycle, pro instance, partition, extraction of highlights, plus so forth. Just the accurate division of the area resolve create the right outcome

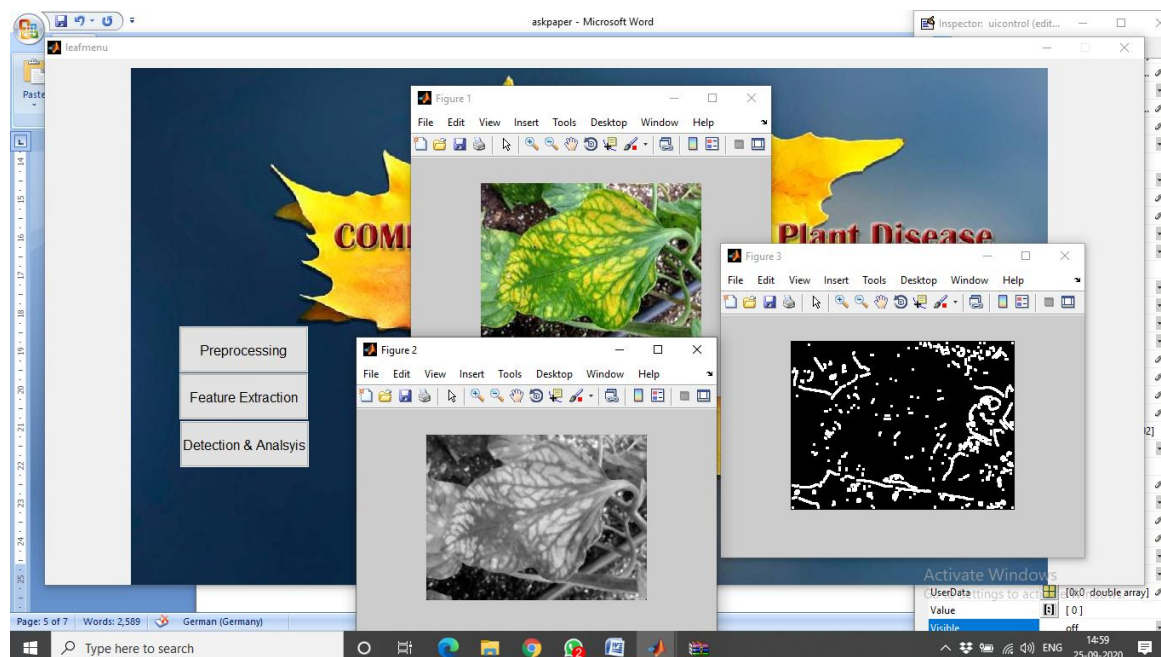


Fig 4: Feature extraction

Feature extraction procedures are applied to acquire highlights to be expensive pro portrait characterization plus acknowledgment. In assorted portrait prepare application, pro instance, character acknowledgment, include extraction procedures be useful. In this module, to obtain the highlights of elected leaf plus utilize pro portrait alliance.

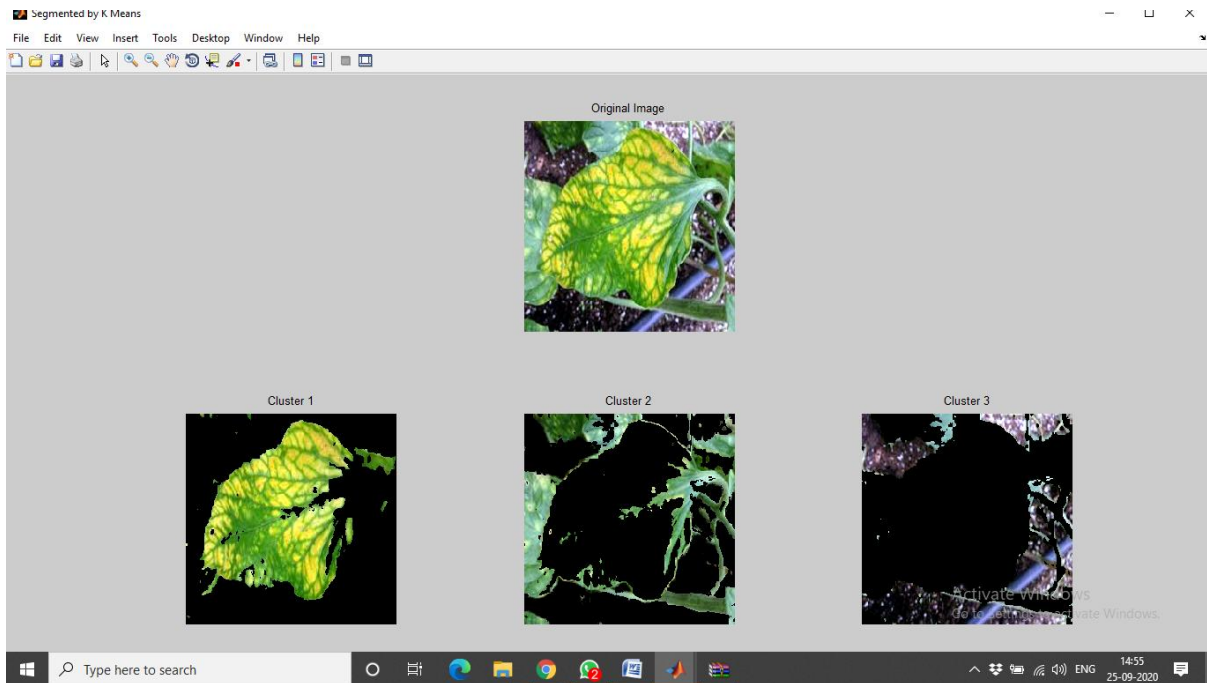


Fig 5: Clustering

clustering is the task of alliance a set of objects in such a way to objects in similar cluster be more alike to each other than to those in other group. cluster preserve therefore be formulate as a multi- aim optimization crisis.

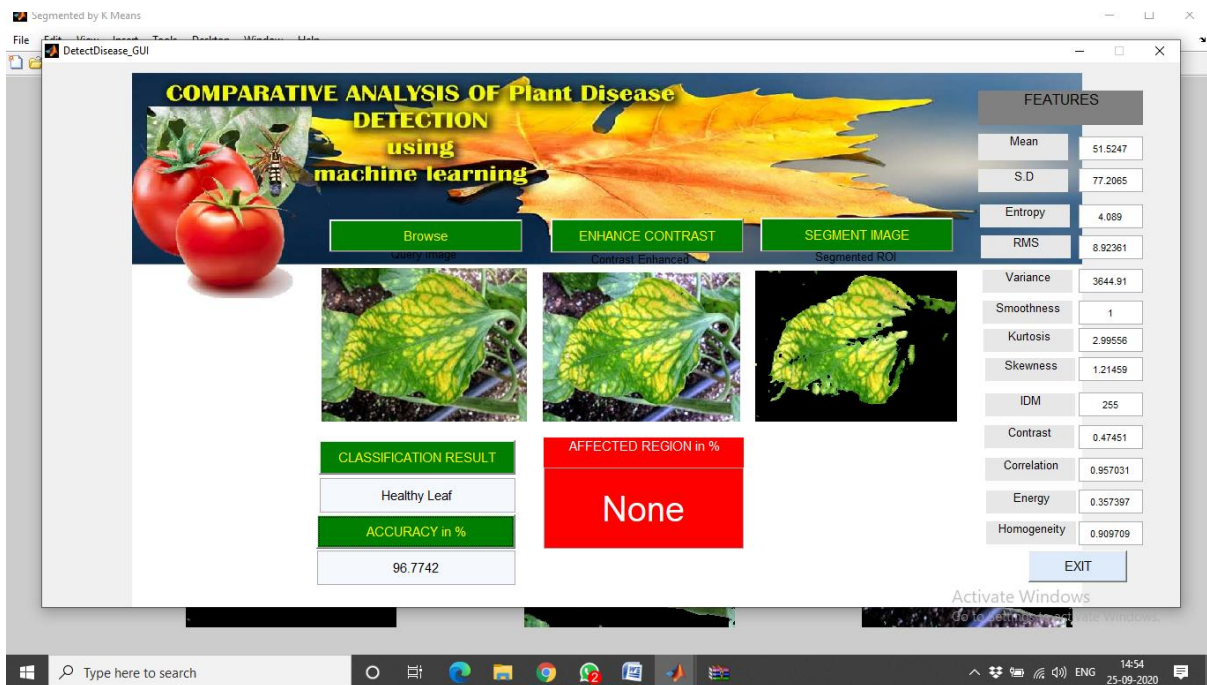
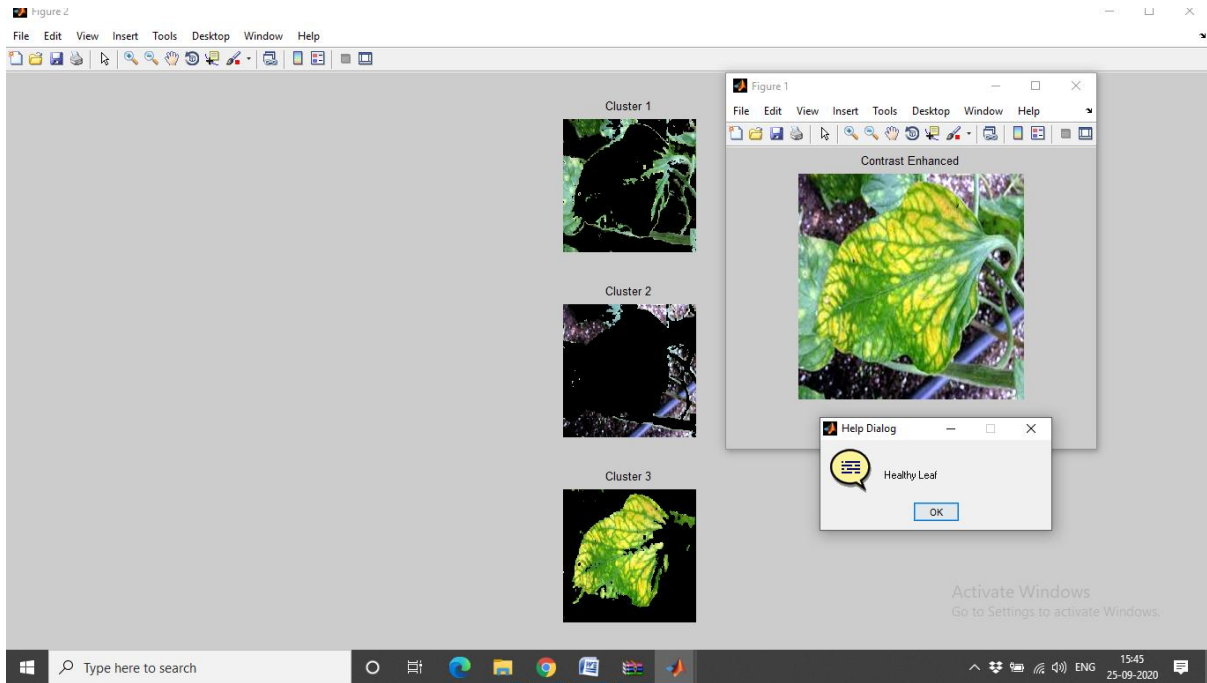


Fig 6: Classification Using SVM

This give us the classification outcome base on SVM algorithm



```
ans =  
  
Affected Area is: 15.0155%  
  
Healthy Leaf  
  
ans =  
  
Accuracy is: 98.3871%  
  
>> |
```

Fig 7: Classification Using K-Means

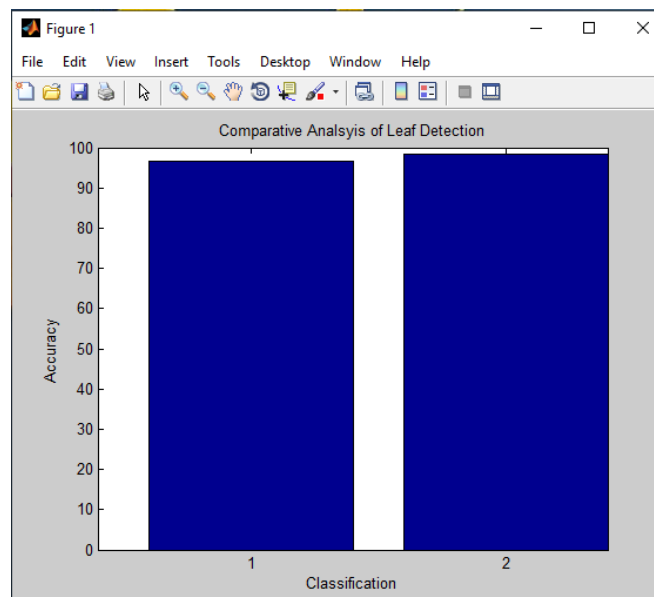


Fig 8: Plot of Classification Vs Accuracy

Classification	Accuracy
SVM	96.7742%
K-Means	98.3871%

**Table 1:** Comparison Analysis of Leaf detection

#### IV. CONCLUSION

Exactness is the main part of sickness location. Along these lines, work is being done to construct up a speedy, program, effectual plus accurate framework to is utilize on undesirable leaves pro the location of sickness. There is likewise an assessment of dissimilar higher depiction handling strategy to give assorted outcome on assorted information bases.

The planned structure screens the developed field infrequently. In the beginning stage, plant sickness is eminent utilize edge recognition plus coordinate histograms. . Machine learning strategies be utilize to prepare the replica so as toassistthroughsettle on a fitting infection option. The pesticide is obtainable to the rancher to control it as a solution proimpurediseases.

#### Future Work

The planned system preserve be implemented in the future via adding further services such as close to government provision, pesticide price list, near open market, as well as many more.

#### REFERENCE

- [1]. FAO. (2009, September 23). <http://www.fao.org>. Retrieved from Food and Agriculture Organization of the Unites States: <http://www.fao.org/news/story/en/item/35571/icod>
- [2]. Bock C. H., Poole G. H., Parker P. E., Gottwald T. R. Plant disease severity estimated visually, by digital photography and image analysis, and by hyperspectral imaging. *Critical Reviews in Plant Sciences*. 2010;29(2):59–107. doi: 10.1080/07352681003617285.
- [3]. Mutka A. M., Bart R. S. Image-based phenotyping of plant disease symptoms. *Frontiers in Plant Science*. 2015;5, article no. 734 doi: 10.3389/fpls.2014.00734.
- [4]. P.Chaudhary, A. K. Chaudhari, A. N. Cheeran, and S. Godara, "Color transform based approach for disease spot detection on plant leaf," *International Journal of Computer Science and Telecommunications*, vol. 3, no. 6, pp. 65–69, 2012.
- [5]. Qin F., Liu D., Sun B., Ruan L., Ma Z., Wang H. Identification of alfalfa leaf diseases using image recognition technology. *PLoS ONE*. 2016;11(12) doi: 10.1371/journal.pone.0168274.e0168274.
- [6]. Al Hiary H., Bani Ahmad S., Reyalat M., Braik M., ALRahamneh Z. Fast and Accurate Detection and Classification of Plant Diseases. *International Journal of Computer Applications*. 2011;17(1):31–38.
- [7]. AdhaoAsmitaSarandhar , V. R. Pawar , " Machine Learning Regression Technique for Cotton Leaf Disease Detection and Controlling using IoT", *International Conference on Electronics, Communication and Aerospace Technology "ICECA 2017*
- [8]. Huang et al., "New Optimized Spectral Indices For Winter Wheat Diseases", *IEEE journal of selected topics in applied earth observations and remote sensing*, pp. 128-135, 2014.
- [9]. Delwiche, M. S. Kim, "Hyperspectral imaging for detection of scab in wheat", *Biol. Qual. Precis. Agric.*, vol. 4203, pp. 13-20, 2000.
- [10]. Chenghai Yang, "A high-resolution airborne four-camera imaging system for agricultural remote sensing", *Computers and Electronics in Agriculture*, pp. 13-24, 2012.
- [11]. Zhihao Qin, Minghua Zhang, T. Christensen, Wenjuan Li, "Remote sensing analysis of rice disease stresses for farm pest management using wide-band airborne data", *Geoscience and Remote Sensing Symposium*, pp. 7-13, 2003.
- [12]. P. R. Rothe, R. V. Kshirsagar, "Cotton Leaf Disease Identification using Pattern Recognition Techniques", *International Conference on Pervasive Computing (ICPC) IEEE*, pp. 1-6, 2015.
- [13]. Viraj A. Gulhane, Maheshkuma R. H. Kolekar, "Diagnosis Of Diseases On Cotton Leaves Using Principal Component Analysis Classifier", *Annual IEEE India Conference (INDICON)*, 2014.
- [14]. Texa plant disease handbook, [online] Available: [http://plantdiseasehandbook.tamu.edu/industryspecial tylfiber-oil-specialty/cotton/](http://plantdiseasehandbook.tamu.edu/industryspecial_tylfiber-oil-specialty/cotton/).
- [15]. Plant village Cotton, [online] Available: <https://www.plantvillage.org/en/topics/cotton>.
- [16]. P. Revathi, M. Hemalatha, "Advance Computing Enrichment Evaluation of Cotton Leaf Spot Disease Detection Using Image Edge detection", *IEEE*, July 2012.
- [17]. DavoudAshourloo, Hossein Aghighi, Ali Akbar Matkan, Mohammad Reza Mobasheri, Amir Moeini Rad, "An Investigation Into Machine Learning Regression Techniques for the Leaf Rust Disease Detection Using Hyperspectral Measurement", *IEEE Journal Of Selected Topics In Applied Earth Observations And Remote Sensing*, pp. 1-7, May 2016.
- [18]. P. Revathi, M. Hemalatha, "Classification Of Cotton Leaf Spot Disease Using Image Processing Edge Detection Technique", *International Conference on Emerging Trends in Science Engineering and Technology IEEE*, pp. 169-173, 2012.

XXXXXXX, et. al. "Comparative Analysis Of Plant Disease Detection Using Machine Learning Algorithm." *International Journal of Modern Engineering Research (IJMER)*, vol. 10(09), 2020, pp 38-45.